

PRIME ESTATES

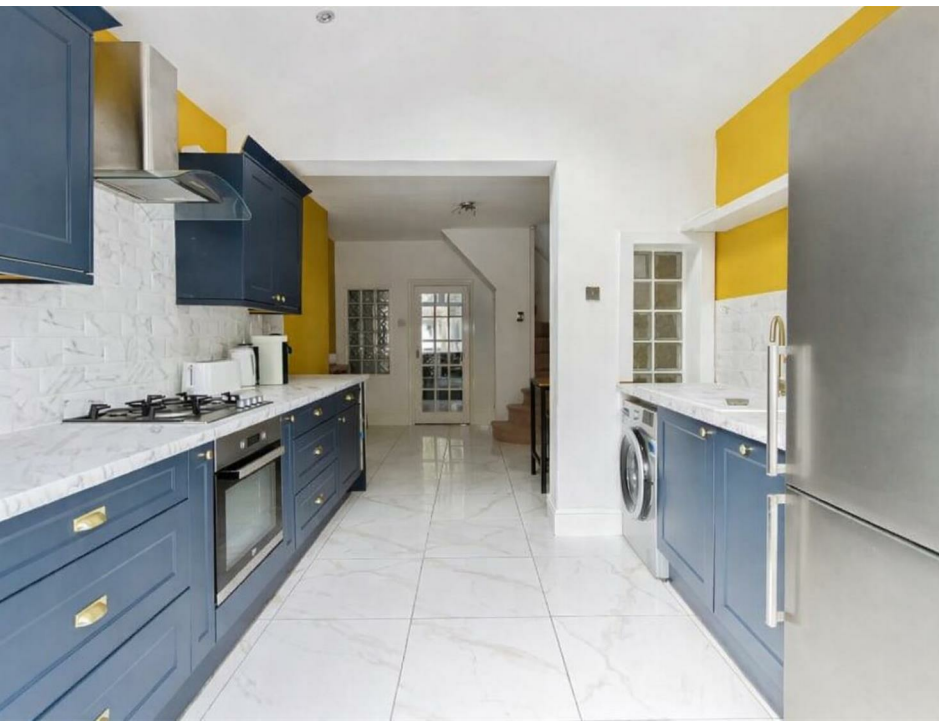
INDEPENDENT ESTATE AGENTS

167 - 169 Church Road, Yardley, Birmingham, B25

8UR

0121 783 3422

yardley@primeestatesuk.com



Wynford Road, Birmingham | Asking Price £215,027

**** WELL PRESENTED THREE-STOREY END TERRACE HOME ** TWO DOUBLE BEDROOMS ** EXTENDED KITCHEN ** NO UPWARD CHAIN ****

AN OPPORTUNITY TO PURCHASE THIS NICELY PRESENTED THREE-STOREY END TERRACE HOME ON WYNFORD ROAD, ACOCKS GREEN, This is an ideal First Time Buy situated in a great location.

This property is accessed via a front garden leading to porch with front door comprises:- LOUNGE, DINING ROOM, KITCHEN and private rear garden to the ground floor, DOUBLE BEDROOM, GOOD SIZE SINGLE FAMILY BATHROOM to first floor, to the second floor SECOND DOUBLE BEDROOM.

Situated close to local schools, shops & transport links this is an ideal family home.

Double glazed and central heating (both where specified)

Early viewing is essential to avoid disappointment.

CALL OUR YARDLEY OFFICE ON 0121-783-3422 FOR A VIEWING NOW!

Energy Performance: D

www.primeestatesuk.com

**** WELL PRESENTED THREE-STOREY END TERRACE HOME ** TWO DOUBLE BEDROOMS ** EXTENDED KITCHEN ** NO UPWARD CHAIN ****

AN OPPORTUNITY TO PURCHASE THIS NICELY PRESENTED THREE-STOREY END TERRACE HOME ON WYNFORD ROAD, ACOCKS GREEN, This is an ideal First Time Buy situated in a great location.

This property is accessed via a front garden leading to porch with front door comprises:- LOUNGE, DINING ROOM, KITCHEN and private rear garden to the ground floor, DOUBLE BEDROOM, GOOD SIZE SINGLE FAMILY BATHROOM to first floor, to the second floor SECOND DOUBLE BEDROOM.

Situated close to local schools, shops & transport links this is an ideal family home.

Double glazed and central heating (both where specified)

Early viewing is essential to avoid disappointment.

CALL OUR YARDLEY OFFICE ON 0121-783-3422 FOR A VIEWING NOW!

Energy Performance: D

Approach

Access is gained via gravelled front garden leading to:

Porch

Front door to:

Lounge

11'3 x 11 (3.43m x 3.35m)

Double glazed bay window to front, central heating radiator and door to:

Dining Area

12'6 x 11'4 (3.81m x 3.45m)

Double glazed window to side, stairs to the first floor and two central heating radiators.

Kitchen

9'8 x 7'8 (2.95m x 2.34m)

Double glazed double doors to rear, fitted with a range of matching wall base and drawer units with work surface over incorporating sink and drainer with mixer tap over, oven hob and extractor.

FIRST FLOOR

Landing

Double glazed side to side, stairs to the second floor and doors to:

Bedroom One

11'2 x 11 (3.40m x 3.35m)

Double glazed window to front and central heating radiator.

Bathroom

10'1 x 9'9 (3.07m x 2.97m)

Double glazed frosted window to rear, suite comprising bath, shower cubicle, low level w.c, pedestal wash hand basin and central heating radiator.

SECOND FLOOR

Bedroom Two

22'1 x 11'4 (6.73m x 3.45m)

Double glazed window to front and rear and central heating radiator.

OUTSIDE

Rear Garden

With patio area, lawned area and side access.

